



MONTHLY MEMBERSHIP PROGRESS REPORT

District 324A4

Results as of: 07/31/2018

GMT: N S SANKAR

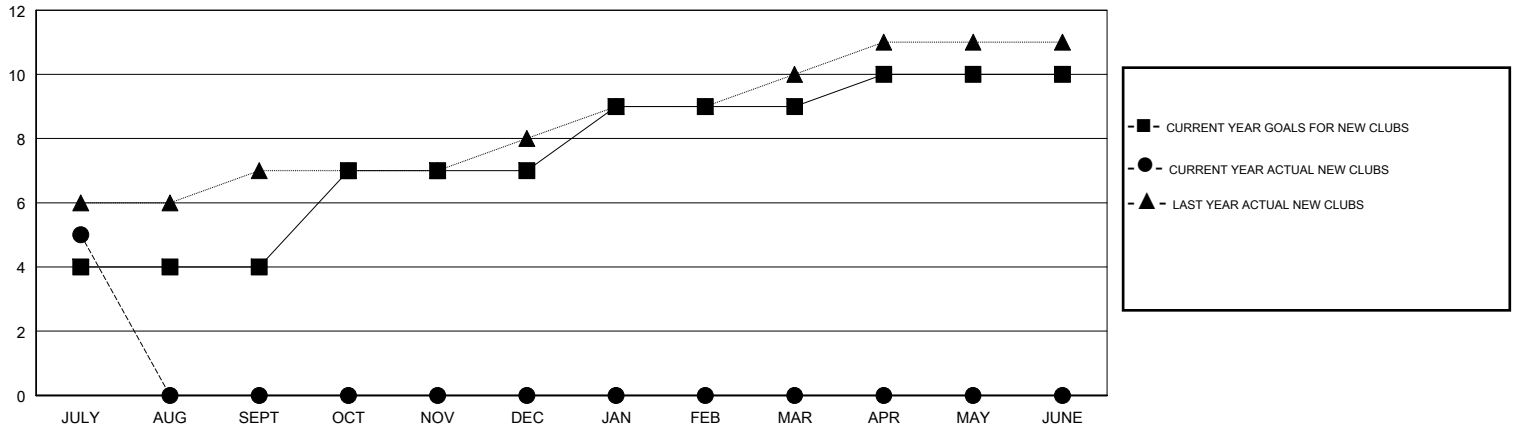
LOCATION INDIA

GMT CA

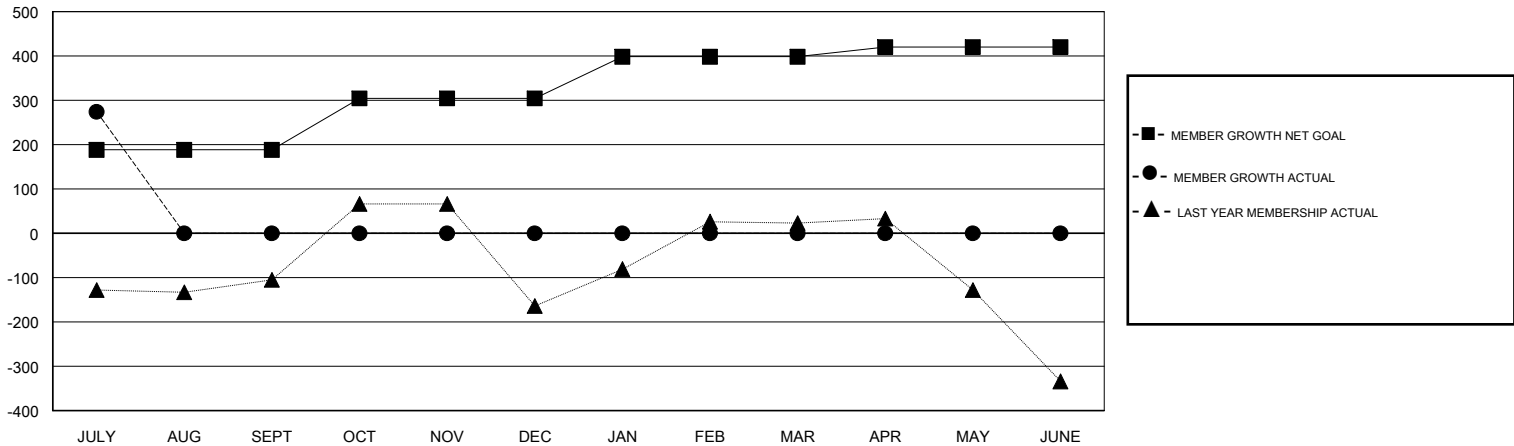
| Clubs | | | |
|-----------------------|---------------|-----------|---------------|
| RESULTS FOR 2018-2019 | | | |
| QUARTER | NEW CLUB GOAL | NEW CLUBS | DROPPED CLUBS |
| JULY/AUG/SEPT | 4 | 5 | 2 |
| OCT/NOV/DEC | 3 | 0 | 0 |
| JAN/FEB/MAR | 2 | 0 | 0 |
| APR/MAY/JUNE | 1 | 0 | 0 |

| Members | | | |
|-----------------------|------------------------|----------------------|--|
| RESULTS FOR 2018-2019 | | | |
| QUARTER | MEMBER GROWTH NET GOAL | MEMBER GROWTH ACTUAL | DROPPED MEMBERS ACTUAL (including transfers) |
| JULY/AUG/SEPT | 188 | 358 | 68 |
| OCT/NOV/DEC | 116 | 0 | 0 |
| JAN/FEB/MAR | 94 | 0 | 0 |
| APR/MAY/JUNE | 22 | 0 | 0 |

GOALS AND ACTUAL NEW CLUBS CUMULATIVE



GOALS AND ACTUAL MEMBERS CUMULATIVE



DROPPED CLUBS: 2

47 CLUBS OF 132 ADDED 1 OR MORE NEW MEMBERS

| GENDER DISTRIBUTION | |
|--|----------------|
| MALE | 4,719 (90.77%) |
| FEMALE | 480 (9.23%) |
| Women Percentage Fiscal Year Goal: 10% | |

| DROPPED MEMBERS | |
|-----------------|-----------|
| DECEASED | 1 |
| CLUB CANCELLED | 18 |
| OTHER | 49 |
| TOTAL | 68 |

[CLICK HERE FOR CUMULATIVE MEMBERSHIP DATA](#)

| | |
|---------------------------------|-----|
| TOTAL FAMILY UNIT MEMBERS | 713 |
| FAMILY MEMBERS PAYING HALF DUES | 398 |